

*lifestyle*  
CHARTERS  
SYDNEY

ENIGMA BROKER'S PACK



# THIS IS ENIGMA

Enigma is a well appointed 65 foot flybridge cruiser, perfect for bringing together family, friends or colleagues, and can accomodate up to 41 guests. After a recent facelift, the Enigma experience is now more luxurious than ever before.

Enigma is perfect for any occasion boasting three entertaining areas, three cabins, two bathrooms, two sun lounges, fully stocked galley, multi zoned SONOS sound system, TV and multimedia player, aqua lily pad, two paddleboards and the only charter boat to have a floating swimming pool.

From \$990 per hour

Up to 41 guests

Sydney Harbour & Pittwater





# FEATURES

Three cabin & two bathrooms  
Multiple entertaining spaces  
Sunbed on accessible bow  
Central galley and bar  
Swim platform & swim toys  
Licensed Bar & BYO available  
Great catering menus  
Sound system connectivity  
Plentiful seating  
Wrap around deck

# CHARTER RATES

*Charter rates include marine crew, fuel and vessel hire.*

Low season - May - September - \$990 per hour, min 3hrs

Shoulder season - October - April (excluding Dec) - \$1,100 per hour, min 4hrs

Peak season - December - \$1,300 per hour, min 4hrs



## BEVERAGES

BYO drinks, \$20pp

Beverage package, min 3hrs, \$20pp/ph

Beverage package with spirits, min 3hrs, \$25pp/ph

Beverage package with spirits & champagne,  
min 3hrs, \$30pp/ph

Soft drink package, \$6.25pp

Consumption bar, no minimum

## CATERING

Classic BBQ from \$50pp

Canapes from \$70pp

Buffet from \$110pp

BYO, no charge

Platters from \$650 minimum spend

Formal sit down from \$150pp

Chef fee where required, \$400 per 4hrs and \$80  
per hour thereafter.

## WAITSTAFF

\$300 per waitstaff for 4hrs & \$75ph thereafter

One required for up to 12 guests

Two required for 13-31 guests

Three required for 32-41 guests

## WHARF FEES

\$50 per wharf

## SURCHARGES

A 20% public holiday surcharge applies to all  
fees, except waitstaff and chef fees where 100%  
surcharge applies.

Special event pricing on Christmas Day  
and New Year's Eve

Minimum five hours on Boxing Day and New  
Year's Day.

## FUN EXTRAS

SUP hire (up to four boards)	\$80 per board
Pool pontoon	\$400 per charter
Sunchill	\$150 per charter
Lilypad	No charge
Clay Bird Shooting on board	\$2,000
Oz Jet Boat ride	from \$1,300
Sommelier roaming wine tasting	from \$600
Live musicians (POA)	from \$2,200



# WHAT'S ON ENIGMA IN 2025

## **PRIVATE VIVID SYDNEY CRUISE - \$2,850**

2hr BYO cruise for up to 12 guests

+ \$25pp charter fee for 13-41 guests

+ 2hr beverage package for \$45pp

+ Grazing board for \$25pp, minimum 10pax

+ Extra charter hour for \$1,000ph + \$20pp/ph for beverage package

## **WHALE WATCHING - \$4,600**

4hr BYO cruise for up to 12 guests

- Minimum four hours
- Catering menu available
- If chef is on board, total guest capacity is 11
- Where sea conditions makes it not possible to venture offshore, rescheduling may be possible depending on availability.



# NEW YEAR'S EVE 2025

**BYO 7hr NYE cruise for up to 12 guests is \$43,500, and \$300pp thereafter.**

**All-inclusive 7hr NYE cruise is \$48,000 and includes:**

- 7hr cruise from 6pm-1am charter on 31 December 2025
- Beverage package including unlimited sparkling wine, white wine, red wine and non-alcoholic drinks.
- Chef prepared dinner
- Up to 12 guests and \$600pp thereafter up to 30 guests



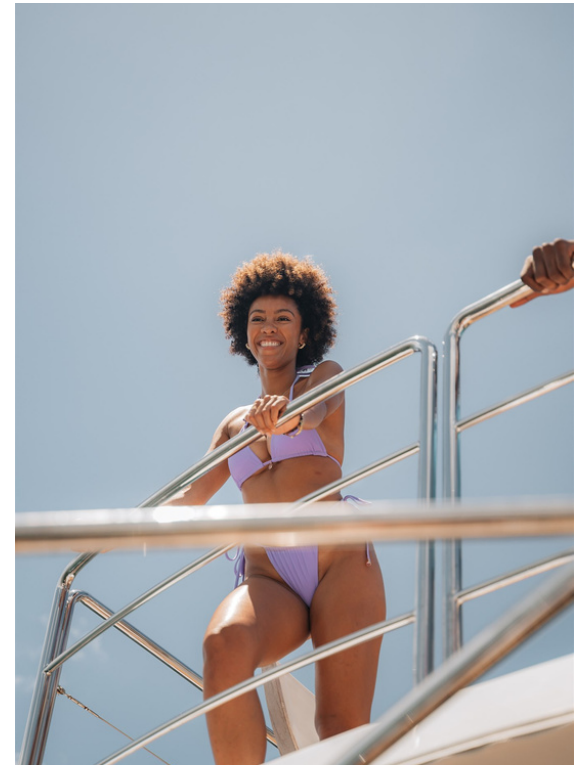
















# WANT TO BOOK ENIGMA?

To enquire about a luxury charter  
experience aboard Enigma, please contact  
Sam Higgins on 0414 408 198 or email  
[bookings@lifestylecharters.com.au](mailto:bookings@lifestylecharters.com.au)

Alternatively scan the QR code  
to find out more!

